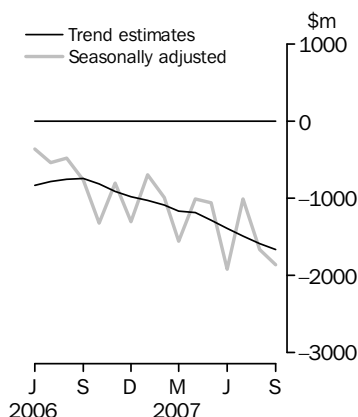


INTERNATIONAL TRADE IN GOODS AND SERVICES

AUSTRALIA

EMBARGO: 11.30AM (CANBERRA TIME) THURS 1 NOV 2007

Balance on Goods and Services



KEY FIGURES

	July 2007 \$m	August 2007 \$m	September 2007 \$m	Aug 07 to Sep 07 % change
TREND				
Balance on goods and services	-1 490	-1 587	-1 667	..
Credits (exports of goods & services)	18 234	18 244	18 259	—
Debits (imports of goods & services)	19 724	19 831	19 926	—
SEASONALLY ADJUSTED				
Balance on goods and services	-1 011	-1 665	-1 862	..
Credits (exports of goods & services)	18 277	18 662	17 916	-4
Debits (imports of goods & services)	19 288	20 327	19 779	-3

.. not applicable

— nil or rounded to zero (including null cells)

KEY POINTS

TREND ESTIMATES

- The provisional trend estimate of the balance on goods and services was a deficit of \$1,667m in September 2007, an increase of \$80m on the revised deficit in August.
- Goods and services credits rose \$15m to \$18,259m. Goods and services debits rose \$95m to \$19,926m.

SEASONALLY ADJUSTED ESTIMATES

- In seasonally adjusted terms, the balance on goods and services was a deficit of \$1,862m in September, an increase of \$197m on the revised deficit in August.
- Goods and services credits fell \$746m (4%) to \$17,916m. Non-rural and other goods fell \$921m (7%) while rural goods rose \$126m (7%). Services credits rose \$49m (1%).
- Goods and services debits fell \$548m (3%) to \$19,779m. Intermediate and other goods fell \$587m (7%), capital goods fell \$34m (1%) while consumption goods rose \$61m (1%). Services debits rose \$11m.

ORIGINAL ESTIMATES

- In original terms, the September 2007 balance on goods and services was a deficit of \$2,057m, an increase of \$66m on the revised deficit in August. Goods and services credits fell \$1,151m (6%) and goods and services debits fell \$1,085m (5%).
- In the three months to September, exports of non-rural and other goods were up \$1.0b (3%) while rural goods were down \$0.9b (14%) on the corresponding period in 2006–07.

INQUIRIES

For further information about these and related statistics, contact the National Information and Referral Service on 1300 135 070 or Selvi Sekhar on Canberra (02) 6252 5540.

NOTES

FORTHCOMING ISSUES

ISSUE	RELEASE DATE
October 2007	3 December 2007
November 2007	10 January 2008
December 2007	4 February 2008
January 2008	6 March 2008
February 2008	7 April 2008
March 2008	6 May 2008

.....

REVISIONS

Revisions were made to both the balance of payments and merchandise trade series to incorporate the latest available administrative data relating to merchandise trade and international trade in services. In original terms, these revisions have:

- increased the deficit on goods and services for August 2007 by \$45m
- decreased the deficit on good and services for 2006–07 by \$31m.

Seasonally adjusted and trend estimates of goods and services have been revised as a result of the annual seasonal re-analysis, which reviews the seasonal and trading day factors in more detail than possible in the monthly processing cycle. There were two main changes resulting from this review. First, coal, coke and briquettes credits will only have a length of month adjustment applied for all time periods. Second, the trend break applying to metal ores and minerals credits for April 2006 has been revised from \$150m to \$500m.

In addition, as advised in the previous issue, ARIMA modelling has been introduced with the annual seasonal re-analysis. For more information on the use of ARIMA modelling see Feature article : Use of ARIMA modelling to reduce revisions, October 2004 issue of *Australian Economic Indicators* (cat. no. 1350.0).

In the September 2007 issue of *Merchandise Imports, Australia* (cat. no. 5439.0), preliminary analysis showed that goods debits decreased by 4% in seasonally adjusted terms. After processing of additional information, final goods debits decreased by 3%.

CHANGES IN THIS ISSUE

Country Groupings

Corrections have been applied to two country groupings used in Merchandise trade country statistics. For all time series, the European Union grouping includes Bulgaria and Romania, making a total of 27 countries. Minor corrections have been made to time series for the OECD grouping so that it includes the current members in all periods.

AUSTRALIAN EXPORTERS

The publication, *Number and Characteristics of Australian Exporters, 2006–07* (cat. no. 5368.0.55.001) is scheduled for release on 13 November 2007.

AVAILABILITY OF DETAILED SERVICES DATA

The International trade in services time series spreadsheets, listed under Time Series Data on page 4, for data on a financial year basis to 2006–07 (cat. no. 5368.0.55.003) are being released concurrently with this issue.

Brian Pink
Australian Statistician

CONTENTS

page

Time series data	4
----------------------------	---

ANALYSIS

Analysis and comments	5
---------------------------------	---

TABLES

INTERNATIONAL TRADE IN GOODS AND SERVICES – BALANCE OF PAYMENTS BASIS

1 Goods and services, summary, seasonally adjusted and trend estimates	9
2 Goods and services, summary, original	10
3 Goods credits, original	11
4 Goods debits, original	12
5 Goods credits, seasonally adjusted	13
6 Goods debits, seasonally adjusted	14
7 Goods credits, trend estimates	15
8 Goods debits, trend estimates	16
9 Services, summary, original	17
10 Services, summary, seasonally adjusted and trend estimates	18
11 Services, original, quarterly	19

INTERNATIONAL MERCHANDISE TRADE – RECORDED TRADE BASIS

12 International merchandise exports, by commodity	20
13 International merchandise imports, by commodity	23
14 International merchandise trade, by country and country groups	26
15 International merchandise trade, by state	27

OTHER TABLES

16 Period average exchange rates per Australian dollar	28
---	----

OTHER INFORMATION

Explanatory Notes	29
Abbreviations	33
Appendix - Related articles	34

TIME SERIES DATA

TIME SERIES DATA

Data available free on the ABS web site <<http://www.abs.gov.au>> include longer time series of tables in this publication and additional spreadsheets and data cubes below:

31 Merchandise exports by Broad Economic Category (BEC)

32 Merchandise exports by industry of origin (ANZSIC)

33 Merchandise imports by Broad Economic Category (BEC)

34 Merchandise imports by Balance of Payments Broad Economic Category (BoPBEC)

35 Merchandise imports by industry of origin (ANZSIC)

36 Merchandise exports, state by country and country groups

37 Merchandise imports, state by country and country groups

91 Monthly seasonal adjustment factors and forward factors for 12 months.

Trade in Services data cubes are usually updated on an annual basis - with the March issue of 5368.0 for calendar year and with the September issue for financial year.

Financial year (cat. no. 5368.0.55.003)

1 International trade in services, credits, state by financial year

2 International trade in services, credits, financial year by state

3 International trade in services, debits, state by financial year

4 International trade in services, debits, financial year by state

5 International trade in services, credits, financial year by country and service

6 International trade in services, credits, service by financial year and by country

7 International trade in services, debits, financial year by country and service

8 International trade in services, debits, service by financial year and by country

9 International trade in services, financial year by detailed service

Calendar year (cat. no. 5368.0.55.004)

1 International trade in services, credits, state by calendar year

2 International trade in services, credits, calendar year by state

3 International trade in services, debits, state by calendar year

4 International trade in services, debits, calendar year by state

5 International trade in services, credits, calendar year by country and service

6 International trade in services, credits, service by calendar year and by country

7 International trade in services, debits, calendar year by country and service

8 International trade in services, debits, service by calendar year and by country

9 International trade in services, calendar year by detailed service

ANALYSIS AND COMMENTS

BALANCE ON GOODS AND SERVICES

The trend estimate of the balance on goods and services in September 2007 was a deficit of \$1,667m, an increase of \$80m on the deficit in August.

In seasonally adjusted terms, the balance on goods and services in September 2007 was a deficit of \$1,862m, an increase of \$197m on the deficit in August.

The sum of the seasonally adjusted balances for the three months to September 2007 was a deficit of \$4,538m, an increase of \$560m on the deficit of \$3,978m for the three months to June 2007. However, if the seasonal factors used in compiling quarterly Balance of Payments are applied, the September quarter 2007 deficit was \$4,387m, an increase of \$522m on the revised June quarter 2007 deficit of \$3,865m.

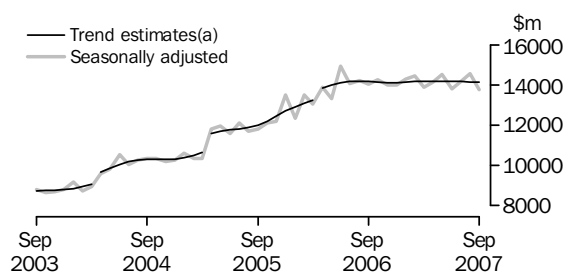
EXPORTS OF GOODS AND SERVICES

The trend estimate of goods and services credits rose \$15m between August and September to \$18,259m.

In seasonally adjusted terms, goods and services credits fell \$746m (4%) to \$17,916m. Non-rural goods fell \$605m (5%) and other goods fell \$317m (25%) while rural goods rose \$126m (7%). Services credits rose \$49m (1%).

Exports of goods

GOODS CREDITS



(a) Trend breaks of \$430m to April 2004, \$819m to April 2005 and \$500m to April 2006 have been applied.

RURAL GOODS

The trend estimate of rural goods exports rose \$6m to \$1,914m.

In seasonally adjusted terms, exports of rural goods rose \$126m (7%) to \$1,990m.

The main components contributing to the rise in the seasonally adjusted series were:

- cereal grains and cereal preparations, up \$88m (39%)
- other rural, up \$18m (2%)
- meat and meat preparations, up \$15m (3%).

In original terms, exports of rural goods rose \$171m (9%) to \$2,035m.

NON-RURAL GOODS

The trend estimate of non-rural goods exports rose \$7m to \$11,087m.

In seasonally adjusted terms, exports of non-rural goods fell \$605m (5%) to \$10,843m.

The main components contributing to the fall in the seasonally adjusted series were:

- other mineral fuels, down \$588m (39%)
- other non-rural, down \$212m (18%).

ANALYSIS AND COMMENTS *continued*

Exports of goods continued

NON-RURAL GOODS *continued*

Partly offsetting these effects were:

- coal, coke and briquettes, up \$74m (4%)
- metals (excluding non-monetary gold), up \$69m (6%)
- machinery, up \$45m (6%).

In original terms, exports of non-rural goods fell \$861m (7%) to \$10,884m.

The main movement in the original series contributing to the fall in seasonally adjusted terms was other mineral fuels, down \$612m (38%), compared to an average August to September rise of 4% over the previous three years, with:

- crude oil, down \$353m (41%), with volumes down 40% and prices down 2%
- Liquid Natural Gas (LNG), down \$165m (38%).

OTHER GOODS

The trend estimate of other goods exports fell \$24m (2%) to \$1,132m.

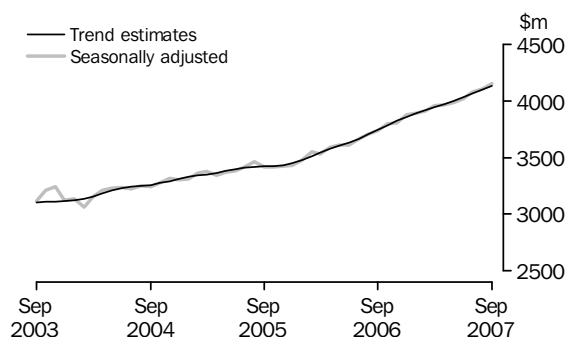
In seasonally adjusted terms, exports of other goods fell \$317m (25%) to \$930m.

The main component contributing to the fall in the seasonally adjusted series was non-monetary gold, down \$306m (28%).

In original terms, exports of other goods fell \$316m (25%) to \$938m.

Exports of services

SERVICES CREDITS



In trend terms, services credits rose \$28m (1%) to \$4,127m.

Seasonally adjusted, services credits rose \$49m (1%) to \$4,153m.

All components contributed to the rise in the seasonally adjusted estimates with:

- travel services, up \$26m (1%)
- transportation services, up \$13m (2%)
- other services, up \$10m (1%).

Seasonally adjusted, tourism related services credits rose \$32m (1%) to \$2,638m. This series is seasonally adjusted independently to the series that comprise services credits.

IMPORTS OF GOODS AND SERVICES

The trend estimate of goods and services debits rose \$95m between August and September to \$19,926m.

ANALYSIS AND COMMENTS *continued*

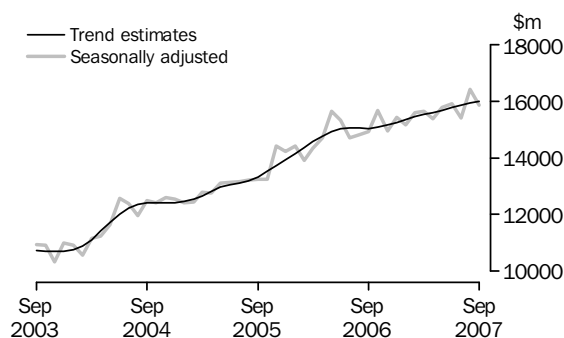
IMPORTS OF GOODS AND SERVICES *continued*

In seasonally adjusted terms, goods and services debits fell \$548m (3%) to \$19,779m. Other goods fell \$320m (36%), intermediate and other merchandise goods fell \$267m (4%) and capital goods fell \$34m (1%), while consumption goods rose \$61m (1%). Services debits rose \$11m.

Preliminary analysis shows that goods imports volumes, in seasonally adjusted terms, rose about 1.9% during the September quarter 2007. The Chain Laspeyres price index fell about 0.6% and the implicit price deflator fell about 0.9%. The final volume and price outcomes will be published in the September quarter 2007 issue of *Balance of Payments and International Investment Position, Australia* (cat. no. 5302.0)

Imports of goods

GOODS DEBITS



CONSUMPTION GOODS

The trend estimate of imports of consumption goods rose \$35m (1%) to \$4,696m.

In seasonally adjusted terms, imports of consumption goods rose \$61m (1%) to \$4,772m.

The main components contributing to the rise in the seasonally adjusted estimates were:

- household electrical items, up \$24m (6%)
- consumption goods n.e.s., up \$19m (1%)
- toys, books and leisure goods, up \$16m (5%).

In original terms, imports of consumption goods fell \$111m (2%) to \$4,957m.

CAPITAL GOODS

The trend estimate of imports of capital goods rose \$33m (1%) to \$3,603m.

In seasonally adjusted terms, imports of capital goods fell \$34m (1%) to \$3,664m.

The components contributing to the fall in the seasonally adjusted estimates were:

- civil aircraft, down \$228m
- ADP equipment, down \$29m (5%)
- industrial transport equipment n.e.s., down \$22m (4%).

Partly offsetting these effects were:

- machinery and industrial equipment, up \$205m (16%)
- capital goods n.e.s., up \$21m (5%).

In original terms, imports of capital goods fell \$205m (5%) to \$3,573m.

ANALYSIS AND COMMENTS *continued*

Imports of goods continued

INTERMEDIATE AND OTHER MERCHANDISE GOODS

The trend estimate of imports of intermediate and other merchandise goods fell \$12m to \$6,907m.

In seasonally adjusted terms, imports of intermediate and other merchandise goods fell \$267m (4%) to \$6,848m.

The main components contributing to the fall in the seasonally adjusted estimates were:

- fuels and lubricants, down \$199m (9%), driven by crude petroleum, down \$151m (11%)
- parts for transport equipment, down \$54m (7%)
- other merchandise goods, down \$23m (19%).

Partly offsetting these effects were:

- organic and inorganic chemicals, up \$27m (7%)
- primary industrial supplies n.e.s., up \$13m (13%)
- textile yarn and fabrics, up \$13m (12%).

In original terms, imports of intermediate and other merchandise goods fell \$701m (10%) to \$6,673m.

OTHER GOODS

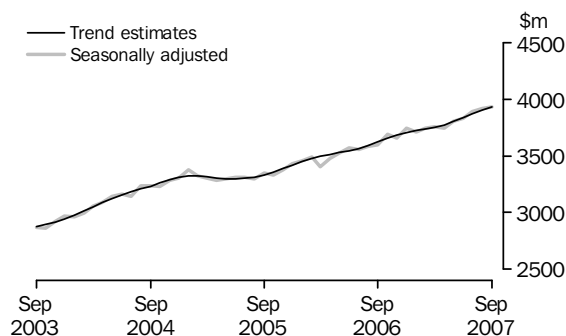
The trend estimate of imports of other goods rose \$13m (2%) to \$791m.

In both original and seasonally adjusted terms, other goods debits fell \$320m (36%) to \$564m.

The main component contributing to the fall in both original and seasonally adjusted estimates was non-monetary gold, down \$310m (42%).

Imports of services

SERVICES DEBITS



In trend terms, services debits rose \$27m (1%) to \$3,929m.

Seasonally adjusted, services debits rose \$11m to \$3,930m.

The components contributing to the rise in the seasonally adjusted estimates were:

- transportation services, up \$31m (2%)
- other services, up \$14m (1%).

Partly offsetting these effects was the travel services component, down \$33m (2%).

Seasonally adjusted, tourism related services debits fell \$30m (1%) to \$1,990m. This series is seasonally adjusted independently to the series that comprise services debits.

GOODS AND SERVICES(a), Summary: **Seasonally Adjusted and Trend Estimates**

Months	BALANCE	CREDITS					DEBITS					
	On goods and services	<i>Total goods and services</i>	<i>Total goods</i>	<i>Rural goods(b)</i>	<i>Non-rural and other goods(b)</i>	<i>Total services</i>	<i>Total goods and services</i>	<i>Total goods</i>	<i>Con- sumption goods</i>	<i>Capital goods</i>	<i>Inter- mediate and other goods</i>	<i>Total services</i>
	\$m	\$m	\$m	\$m	\$m	\$m	\$m	\$m	\$m	\$m	\$m	\$m
SEASONALLY ADJUSTED												
2006												
July	-541	17 714	14 050	2 232	11 818	3 664	-18 255	-14 695	-4 443	-3 107	-7 145	-3 560
August	-481	17 923	14 221	2 270	11 950	3 702	-18 403	-14 820	-4 436	-3 292	-7 091	-3 583
September	-761	17 747	14 009	2 198	11 812	3 738	-18 508	-14 908	-4 422	-3 302	-7 184	-3 600
October	-1 319	18 033	14 237	2 207	12 030	3 796	-19 352	-15 665	-4 665	-3 474	-7 527	-3 687
November	-809	17 799	13 996	2 206	11 790	3 803	-18 608	-14 950	-4 587	-3 354	-7 009	-3 658
December	-1 301	17 866	13 991	2 102	11 889	3 875	-19 167	-15 421	-4 608	-3 659	-7 154	-3 746
2007												
January	-696	18 174	14 280	2 046	12 234	3 893	-18 870	-15 163	-4 639	-3 462	-7 063	-3 707
February	-993	18 343	14 430	2 078	12 352	3 913	-19 336	-15 590	-4 870	-3 531	-7 189	-3 746
March	-1 556	17 844	13 885	2 034	11 851	3 960	-19 401	-15 645	-4 636	-3 481	-7 529	-3 755
April	-1 006	18 121	14 160	1 966	12 194	3 961	-19 126	-15 384	-4 702	-3 321	-7 361	-3 742
May	-1 057	18 514	14 529	1 955	12 574	3 985	-19 571	-15 765	-4 599	-3 721	-7 444	-3 806
June	-1 915	17 831	13 816	1 845	11 971	4 016	-19 747	-15 920	-4 583	-3 560	-7 777	-3 827
July	-1 011	18 277	14 200	1 943	12 257	4 077	-19 288	-15 401	-4 584	-3 262	-7 555	-3 887
August	-1 665	18 662	14 558	1 864	12 694	4 104	-20 327	-16 408	-4 711	-3 698	-7 999	-3 919
September	-1 862	17 916	13 764	1 990	11 773	4 153	-19 779	-15 848	-4 772	-3 664	-7 412	-3 930
TREND ESTIMATES												
2006												
July	-781	17 845	14 182	2 211	11 970	3 663	-18 626	-15 060	-4 449	-3 278	-7 333	-3 566
August	-757	17 888	14 187	2 223	11 965	3 701	-18 645	-15 052	-4 476	-3 295	-7 281	-3 593
September	-749	17 911	14 170	2 220	11 950	3 741	-18 660	-15 037	-4 506	-3 335	-7 196	-3 623
October	-811	17 915	14 132	2 202	11 930	3 782	-18 726	-15 072	-4 551	-3 398	-7 123	-3 654
November	-908	17 929	14 106	2 169	11 937	3 823	-18 836	-15 154	-4 605	-3 453	-7 096	-3 682
December	-982	17 977	14 118	2 130	11 988	3 859	-18 960	-15 253	-4 656	-3 490	-7 108	-3 706
2007												
January	-1 027	18 051	14 160	2 090	12 071	3 891	-19 078	-15 354	-4 692	-3 510	-7 152	-3 724
February	-1 088	18 093	14 174	2 050	12 125	3 918	-19 180	-15 443	-4 703	-3 509	-7 231	-3 737
March	-1 166	18 131	14 188	2 008	12 179	3 943	-19 296	-15 545	-4 689	-3 501	-7 355	-3 752
April	-1 185	18 162	14 194	1 971	12 223	3 968	-19 348	-15 574	-4 664	-3 494	-7 417	-3 773
May	-1 286	18 189	14 192	1 942	12 250	3 997	-19 475	-15 673	-4 642	-3 499	-7 532	-3 803
June	-1 388	18 212	14 181	1 921	12 260	4 031	-19 600	-15 763	-4 632	-3 518	-7 613	-3 837
July	-1 490	18 234	14 168	1 910	12 258	4 066	-19 724	-15 852	-4 641	-3 543	-7 668	-3 871
August	-1 587	18 244	14 144	1 908	12 237	4 099	-19 831	-15 929	-4 661	-3 570	-7 698	-3 902
September	-1 667	18 259	14 132	1 914	12 218	4 127	-19 926	-15 997	-4 696	-3 603	-7 698	-3 929

(a) For sign conventions, see paragraph 11 of the Explanatory Notes.

(b) For all time periods, estimates for sugar, sugar preparations and honey are included in Non-rural and other goods.

GOODS AND SERVICES(a), Summary: Original

	BALANCE	CREDITS					DEBITS					
	<i>On goods and services</i>	<i>Total goods and services</i>	<i>Total goods</i>	<i>Rural goods(b)</i>	<i>Non-rural and other goods(b)</i>	<i>Total services</i>	<i>Total goods and services</i>	<i>Total goods</i>	<i>Con- sumption goods</i>	<i>Capital goods</i>	<i>Inter- mediate and other goods</i>	<i>Total services</i>
	\$m	\$m	\$m	\$m	\$m	\$m	\$m	\$m	\$m	\$m	\$m	\$m
FINANCIAL YEAR												
2004-05	-22 626	167 562	127 867	25 687	102 180	39 695	-190 188	-150 873	-47 143	-35 967	-67 763	-39 315
2005-06	-14 520	196 274	154 425	25 312	129 113	41 849	-210 794	-169 716	-50 322	-39 996	-79 398	-41 078
2006-07	-12 010	215 800	169 555	25 117	144 438	46 245	-227 810	-183 443	-55 000	-41 170	-87 273	-44 367
MONTHS												
2006												
July	101	18 184	14 467	2 205	12 262	3 717	-18 083	-14 420	-4 391	-3 027	-7 002	-3 663
August	-784	18 227	14 456	2 261	12 195	3 771	-19 011	-15 481	-4 768	-3 394	-7 319	-3 530
September	-1 484	17 756	14 151	2 266	11 885	3 605	-19 240	-15 336	-4 810	-3 318	-7 208	-3 904
October	-1 787	18 701	14 760	2 277	12 483	3 941	-20 488	-16 666	-5 276	-3 654	-7 736	-3 822
November	-1 563	17 861	13 999	2 213	11 786	3 862	-19 424	-15 881	-5 143	-3 626	-7 112	-3 543
December	-96	18 688	14 799	2 201	12 598	3 889	-18 784	-14 816	-4 351	-3 658	-6 807	-3 968
2007												
January	-2 036	16 559	12 723	1 651	11 072	3 836	-18 595	-14 717	-4 371	-3 229	-7 117	-3 878
February	-237	17 330	13 351	1 978	11 373	3 979	-17 567	-14 281	-4 387	-3 026	-6 868	-3 286
March	-1 026	18 144	14 035	2 155	11 880	4 109	-19 170	-15 539	-4 413	-3 449	-7 677	-3 631
April	-452	17 995	13 967	1 927	12 040	4 028	-18 447	-14 798	-4 330	-3 223	-7 245	-3 649
May	-754	18 688	14 876	2 085	12 791	3 812	-19 442	-15 826	-4 415	-3 821	-7 590	-3 616
June	-1 892	17 667	13 971	1 898	12 073	3 696	-19 559	-15 682	-4 345	-3 745	-7 592	-3 877
July	-900	18 599	14 462	1 900	12 562	4 137	-19 499	-15 457	-4 644	-3 247	-7 566	-4 042
August	-1 991	19 034	14 863	1 864	12 999	4 171	-21 025	-17 104	-5 068	-3 778	-8 258	-3 921
September	-2 057	17 883	13 857	2 035	11 822	4 026	-19 940	-15 767	-4 957	-3 573	-7 237	-4 173
FINANCIAL YEAR TO DATE												
3 months ended												
September												
2006	-2 167	54 167	43 074	6 732	36 342	11 093	-56 334	-45 237	-13 969	-9 739	-21 529	-11 097
2007	-4 948	55 516	43 182	5 799	37 383	12 334	-60 464	-48 328	-14 669	-10 598	-23 061	-12 136

(a) For sign conventions, see paragraph 11 of the Explanatory Notes.

(b) For all time periods, estimates for sugar, sugar preparations and honey are included in Non-rural and other goods.

							3 MONTHS ENDED SEPTEMBER		Change
	2004-05	2005-06	2006-07	Jul 2007	Aug 2007	Sep 2007	2006	2007	
	\$m	\$m	\$m	\$m	\$m	\$m	\$m	\$m	%
Total goods credits	127 867	154 425	169 555	14 462	14 863	13 857	43 074	43 182	0.3
<i>Rural goods</i>	25 687	25 312	25 117	1 900	1 864	2 035	6 732	5 799	-13.9
Meat and meat preparations	6 937	6 709	7 078	516	516	577	1 799	1 609	-10.6
Cereal grains and cereal preparations	5 159	4 852	4 171	357	220	322	1 441	899	-37.6
Wool and sheepskins	2 838	2 544	3 065	201	139	228	609	568	-6.7
Other rural(a)	10 753	11 207	10 803	826	989	908	2 883	2 723	-5.5
<i>Non-rural goods</i>	94 328	118 164	131 813	11 402	11 745	10 884	33 284	34 031	2.2
Metal ores and minerals	19 854	28 936	35 348	3 202	3 205	3 076	8 583	9 483	10.5
Coal, coke and briquettes	17 236	24 353	21 928	1 587	1 750	1 766	5 805	5 103	-12.1
Other mineral fuels	11 151	13 220	15 642	1 347	1 604	992	4 300	3 943	-8.3
Metals (excl. non-monetary gold)	8 668	11 278	14 829	1 306	1 166	1 189	3 400	3 661	7.7
Machinery	7 488	8 087	8 437	753	758	809	2 214	2 320	4.8
Transport equipment	4 943	5 316	4 645	462	463	472	1 101	1 397	26.9
Other manufactures	14 043	14 926	16 192	1 457	1 513	1 512	4 116	4 482	8.9
Other non-rural (incl. sugar and beverages)	10 945	12 048	14 792	1 288	1 286	1 068	3 765	3 642	-3.3
<i>Other goods</i>	7 852	10 949	12 625	1 160	1 254	938	3 058	3 352	9.6
Goods for processing	241	368	417	23	19	12	114	54	-52.6
Repairs on goods	67	74	90	8	8	9	22	25	13.6
Goods procured in ports by carriers	1 072	1 420	1 379	114	117	113	389	344	-11.6
Non-monetary gold	6 472	9 087	10 739	1 015	1 110	804	2 533	2 929	15.6

(a) For all time periods, estimates for sugar, sugar preparations and honey are included in Other non-rural.

GOODS DEBITS(a): Original

							3 MONTHS ENDED SEPTEMBER		Change
	2004-05	2005-06	2006-07	Jul 2007	Aug 2007	Sep 2007	2006	2007	
	\$m	\$m	\$m	\$m	\$m	\$m	\$m	\$m	%
Total goods debits	-150 873	-169 716	-183 443	-15 457	-17 104	-15 767	-45 237	-48 328	6.8
<i>Consumption goods</i>	-47 143	-50 322	-55 000	-4 644	-5 068	-4 957	-13 969	-14 669	5.0
Food and beverages, mainly for consumption	-5 767	-6 170	-7 182	-580	-703	-651	-1 681	-1 934	15.1
Household electrical items	-4 024	-4 291	-4 609	-415	-456	-482	-1 180	-1 353	14.7
Non-industrial transport equipment	-13 003	-13 589	-14 889	-1 177	-1 276	-1 291	-3 642	-3 744	2.8
Textiles, clothing and footwear	-5 811	-6 365	-6 805	-614	-658	-589	-1 837	-1 861	1.3
Toys, books and leisure goods	-3 740	-4 055	-4 330	-328	-403	-453	-1 171	-1 184	1.1
Consumption goods n.e.s.	-14 798	-15 852	-17 185	-1 530	-1 572	-1 491	-4 458	-4 593	3.0
<i>Capital goods</i>	-35 967	-39 996	-41 170	-3 247	-3 778	-3 573	-9 739	-10 598	8.8
Machinery and industrial equipment	-13 409	-14 328	-15 304	-1 255	-1 408	-1 411	-3 737	-4 074	9.0
ADP equipment	-5 761	-6 073	-6 847	-588	-573	-538	-1 593	-1 699	6.7
Telecommunications equipment	-4 568	-5 334	-5 333	-435	-459	-495	-1 323	-1 389	5.0
Civil aircraft	-2 496	-2 967	-1 666	-10	-299	-71	-405	-380	-6.2
Industrial transport equipment n.e.s.	-4 981	-5 495	-6 433	-496	-573	-564	-1 270	-1 633	28.6
Capital goods n.e.s.	-4 752	-5 799	-5 587	-463	-466	-494	-1 411	-1 423	0.9
<i>Intermediate and other merchandise goods</i>	-63 730	-72 722	-79 871	-6 725	-7 374	-6 673	-19 736	-20 772	5.2
Food and beverages, mainly for industry	-659	-651	-819	-73	-73	-64	-186	-210	12.9
Primary industrial supplies n.e.s.	-1 052	-1 193	-1 555	-138	-114	-115	-353	-367	4.0
Fuels and lubricants	-14 720	-21 014	-21 433	-1 800	-2 172	-1 973	-5 514	-5 945	7.8
Parts for transport equipment	-7 008	-7 314	-8 355	-698	-817	-685	-2 098	-2 200	4.9
Parts for ADP equipment	-1 787	-1 857	-1 621	-102	-108	-100	-488	-310	-36.5
Other parts for capital goods	-9 485	-10 154	-11 764	-1 021	-1 025	-960	-2 820	-3 006	6.6
Organic and inorganic chemicals	-3 622	-4 134	-4 406	-383	-413	-397	-1 007	-1 193	18.5
Paper and paperboard	-2 313	-2 302	-2 372	-217	-231	-204	-640	-652	1.9
Textile yarn and fabrics	-1 452	-1 361	-1 365	-116	-117	-118	-370	-351	-5.1
Iron and steel	-3 008	-3 239	-3 816	-331	-323	-259	-809	-913	12.9
Plastics	-2 428	-2 517	-2 958	-242	-262	-259	-708	-763	7.8
Processed industrial supplies n.e.s.	-15 142	-15 856	-17 788	-1 517	-1 600	-1 443	-4 288	-4 560	6.3
Other merchandise goods	-1 054	-1 130	-1 619	-87	-119	-96	-455	-302	-33.6
<i>Other goods</i>	-4 033	-6 676	-7 402	-841	-884	-564	-1 793	-2 289	27.7
Goods for processing	-243	-445	-507	-1	-6	-1	-207	-8	-96.1
Repairs on goods	-182	-115	-131	-14	-17	-9	-44	-40	-9.1
Goods procured in ports by carriers	-1 049	-1 406	-1 448	-118	-118	-121	-428	-357	-16.6
Non-monetary gold	-2 559	-4 710	-5 316	-708	-743	-433	-1 114	-1 884	69.1

(a) For sign conventions, see paragraph 11 of the Explanatory Notes.

GOODS CREDITS: Seasonally Adjusted

	Dec 2006	Jan 2007	Feb 2007	Mar 2007	Apr 2007	May 2007	Jun 2007	Jul 2007	Aug 2007	Sep 2007
	\$m	\$m	\$m	\$m	\$m	\$m	\$m	\$m	\$m	\$m
Total goods credits	13 991	14 280	14 430	13 885	14 160	14 529	13 816	14 200	14 558	13 764
<i>Rural goods</i>	2 102	2 046	2 078	2 034	1 966	1 955	1 845	1 943	1 864	1 990
Meat and meat preparations	626	639	612	584	550	526	505	530	537	552
Cereal grains and cereal preparations	324	278	292	280	287	288	230	374	228	316
Wool and sheepskins	253	269	278	270	267	269	262	223	214	220
Other rural(a)	900	860	896	900	862	872	848	816	885	903
<i>Non-rural goods</i>	10 851	11 244	11 233	10 859	11 136	11 362	10 680	11 097	11 448	10 843
Metal ores and minerals	3 026	2 883	3 079	2 658	2 968	3 115	2 927	3 176	3 228	3 220
Coal, coke and briquettes(b)	1 797	1 973	1 740	1 813	1 785	1 760	1 667	1 558	1 718	1 792
Other mineral fuels	1 267	1 354	1 285	1 304	1 371	1 280	1 297	1 147	1 515	927
Metals (excl. non-monetary gold)	1 269	1 304	1 334	1 289	1 330	1 342	1 062	1 291	1 194	1 263
Machinery	672	713	693	720	739	729	722	724	722	767
Transport equipment	384	346	411	380	387	433	376	482	438	454
Other manufactures	1 276	1 406	1 394	1 482	1 257	1 388	1 370	1 418	1 439	1 437
Other non-rural (incl. sugar and beverages)	1 160	1 264	1 296	1 215	1 300	1 314	1 259	1 300	1 194	982
<i>Other goods</i>	1 038	991	1 119	992	1 058	1 212	1 291	1 160	1 247	930
Goods for processing(c)	14	36	28	61	9	55	43	23	19	12
Repairs on goods(c)	7	5	6	10	7	9	12	8	8	9
Goods procured in ports by carriers	118	116	113	114	116	111	111	114	110	105
Non-monetary gold(c)	899	834	972	807	926	1 037	1 125	1 015	1 110	804

(a) For all time periods, estimates for sugar, sugar preparations and honey are included in Other non-rural.

(b) Only a length-of-month effect has been applied to this component

(c) This component is not seasonally adjusted.

GOODS DEBITS(a): Seasonally Adjusted

	Dec 2006	Jan 2007	Feb 2007	Mar 2007	Apr 2007	May 2007	Jun 2007	Jul 2007	Aug 2007	Sep 2007
	\$m	\$m	\$m	\$m	\$m	\$m	\$m	\$m	\$m	\$m
Total goods debits	-15 421	-15 163	-15 590	-15 645	-15 384	-15 765	-15 920	-15 401	-16 408	-15 848
<i>Consumption goods</i>	-4 608	-4 639	-4 870	-4 636	-4 702	-4 599	-4 583	-4 584	-4 711	-4 772
Food and beverages, mainly for consumption	-615	-605	-672	-639	-596	-601	-563	-630	-662	-652
Household electrical items	-387	-355	-384	-383	-348	-398	-409	-420	-421	-445
Non-industrial transport equipment	-1 264	-1 297	-1 288	-1 269	-1 381	-1 174	-1 166	-1 167	-1 262	-1 268
Textiles, clothing and footwear	-569	-557	-602	-553	-564	-567	-579	-565	-575	-581
Toys, books and leisure goods	-358	-369	-375	-384	-372	-374	-369	-346	-355	-371
Consumption goods n.e.s.	-1 415	-1 455	-1 549	-1 409	-1 441	-1 485	-1 496	-1 456	-1 436	-1 455
<i>Capital goods</i>	-3 659	-3 462	-3 531	-3 481	-3 321	-3 721	-3 560	-3 262	-3 698	-3 664
Machinery and industrial equipment	-1 272	-1 302	-1 292	-1 343	-1 308	-1 234	-1 268	-1 278	-1 281	-1 486
ADP equipment	-592	-609	-647	-590	-562	-563	-552	-550	-600	-571
Telecommunications equipment	-446	-451	-403	-428	-440	-468	-469	-441	-454	-473
Civil aircraft(b)	-352	-27	-57	-14	-35	-414	-258	-10	-299	-71
Industrial transport equipment n.e.s.	-537	-607	-679	-621	-526	-578	-551	-526	-599	-577
Capital goods n.e.s.	-460	-465	-453	-485	-450	-464	-462	-456	-466	-487
<i>Intermediate and other merchandise goods</i>	-6 677	-6 461	-6 478	-7 035	-6 775	-6 903	-6 930	-6 714	-7 115	-6 848
Food and beverages, mainly for industry	-95	-66	-69	-68	-70	-69	-70	-69	-70	-63
Primary industrial supplies n.e.s.(c)	-143	-118	-144	-148	-150	-95	-121	-149	-99	-112
Fuels and lubricants(b)	-1 881	-1 519	-1 512	-1 877	-1 769	-2 059	-2 014	-1 800	-2 172	-1 973
Parts for transport equipment	-678	-687	-716	-737	-702	-679	-706	-691	-762	-708
Parts for ADP equipment	-149	-135	-110	-117	-110	-117	-103	-101	-104	-100
Other parts for capital goods	-970	-1 078	-1 007	-1 042	-1 037	-1 022	-987	-982	-990	-978
Organic and inorganic chemicals(c)	-270	-393	-379	-370	-366	-345	-322	-404	-401	-428
Paper and paperboard	-191	-198	-204	-197	-204	-211	-196	-212	-209	-198
Textile yarn and fabrics	-114	-111	-114	-112	-118	-107	-109	-107	-107	-120
Iron and steel	-300	-342	-325	-356	-331	-309	-331	-330	-302	-298
Plastics	-254	-243	-248	-256	-250	-259	-253	-251	-257	-264
Processed industrial supplies n.e.s.	-1 474	-1 487	-1 568	-1 474	-1 587	-1 522	-1 535	-1 531	-1 523	-1 511
Other merchandise goods(b)	-157	-85	-83	-280	-81	-108	-183	-87	-119	-96
<i>Other goods</i>	-477	-602	-711	-494	-586	-541	-847	-841	-884	-564
Goods for processing(b)	-81	-50	-29	-112	-1	-1	-5	-1	-6	-1
Repairs on goods(b)	-7	-10	-17	-11	-8	-10	-10	-14	-17	-9
Goods procured in ports by carriers(b)	-120	-110	-110	-109	-109	-109	-109	-118	-118	-121
Non-monetary gold(d)	-269	-432	-555	-262	-468	-421	-723	-708	-743	-433

(a) For sign conventions, see paragraph 11 of the Explanatory Notes.

(b) These components are not seasonally adjusted.

(c) In using these seasonally adjusted series, care should be exercised because of the difficulties associated with reliably estimating the seasonal pattern.

(d) From October 1995, this component is not seasonally adjusted.

	Dec 2006	Jan 2007	Feb 2007	Mar 2007	Apr 2007	May 2007	Jun 2007	Jul 2007	Aug 2007	Sep 2007
	\$m	\$m	\$m	\$m	\$m	\$m	\$m	\$m	\$m	\$m
Total goods credits	14 118	14 160	14 174	14 188	14 194	14 192	14 181	14 168	14 144	14 132
<i>Rural goods</i>	2 130	2 090	2 050	2 008	1 971	1 942	1 921	1 910	1 908	1 914
Meat and meat preparations	630	622	604	580	556	538	529	526	528	532
Cereal grains and cereal preparations	332	301	284	278	279	281	285	287	290	293
Wool and sheepskins	257	266	272	273	269	260	249	237	226	217
Other rural(a)	911	901	890	877	867	862	859	860	864	871
<i>Non-rural goods</i>	11 014	11 071	11 092	11 098	11 094	11 086	11 080	11 081	11 080	11 087
Metal ores and minerals	2 950	2 937	2 918	2 914	2 940	2 992	3 057	3 122	3 179	3 242
Coal, coke and briquettes	1 829	1 832	1 825	1 799	1 760	1 722	1 697	1 686	1 688	1 692
Other mineral fuels	1 302	1 310	1 313	1 316	1 317	1 307	1 286	1 255	1 218	1 176
Metals (excl. non-monetary gold)	1 261	1 295	1 312	1 309	1 290	1 264	1 241	1 225	1 217	1 216
Machinery	685	694	706	716	723	726	729	732	737	741
Transport equipment	389	384	382	386	397	410	423	435	446	456
Other manufactures	1 362	1 374	1 380	1 379	1 377	1 379	1 387	1 401	1 417	1 431
Other non-rural (incl. sugar and beverages)	1 236	1 244	1 257	1 278	1 290	1 285	1 262	1 224	1 178	1 132
<i>Other goods</i>	974	1 000	1 033	1 081	1 130	1 164	1 180	1 177	1 156	1 132
Goods for processing	28	32	36	38	39	37	34	28	23	17
Repairs on goods	6	6	7	8	9	9	9	9	9	9
Goods procured in ports by carriers	113	114	114	115	114	113	112	111	110	108
Non-monetary gold	827	848	876	921	968	1 005	1 026	1 029	1 015	997

(a) For all time periods, estimates for sugar, sugar preparations and honey are included in Other non-rural.

GOODS DEBITS(a): Trend Estimates

	Dec 2006	Jan 2007	Feb 2007	Mar 2007	Apr 2007	May 2007	Jun 2007	Jul 2007	Aug 2007	Sep 2007
	\$m	\$m	\$m	\$m	\$m	\$m	\$m	\$m	\$m	\$m
Total goods debits	-15 253	-15 354	-15 443	-15 545	-15 574	-15 673	-15 763	-15 852	-15 929	-15 997
<i>Consumption goods</i>	-4 656	-4 692	-4 703	-4 689	-4 664	-4 642	-4 632	-4 641	-4 661	-4 696
Food and beverages, mainly for consumption	-625	-633	-631	-622	-612	-608	-610	-618	-629	-643
Household electrical items	-387	-379	-373	-372	-379	-390	-403	-415	-427	-437
Non-industrial transport equipment	-1 276	-1 292	-1 294	-1 282	-1 259	-1 237	-1 220	-1 213	-1 215	-1 221
Textiles, clothing and footwear	-571	-571	-571	-569	-569	-569	-570	-572	-574	-578
Toys, books and leisure goods	-361	-368	-373	-376	-374	-370	-365	-361	-359	-358
Consumption goods n.e.s.	-1 435	-1 448	-1 460	-1 468	-1 470	-1 468	-1 464	-1 461	-1 457	-1 459
<i>Capital goods</i>	-3 490	-3 510	-3 509	-3 501	-3 494	-3 499	-3 518	-3 543	-3 570	-3 603
Machinery and industrial equipment	-1 301	-1 308	-1 306	-1 295	-1 283	-1 279	-1 285	-1 302	-1 328	-1 357
ADP equipment	-599	-605	-603	-593	-581	-570	-564	-564	-566	-572
Telecommunications equipment	-442	-438	-435	-436	-441	-448	-455	-459	-463	-464
Civil aircraft	-103	-92	-94	-114	-141	-170	-192	-195	-185	-170
Industrial transport equipment n.e.s.	-575	-599	-606	-601	-587	-570	-559	-558	-560	-568
Capital goods n.e.s.	-470	-468	-465	-462	-461	-461	-462	-465	-468	-471
<i>Intermediate and other merchandise goods</i>	-6 530	-6 582	-6 657	-6 745	-6 821	-6 869	-6 896	-6 910	-6 919	-6 907
Food and beverages, mainly for industry	-70	-69	-69	-69	-69	-69	-69	-69	-68	-67
Primary industrial supplies n.e.s.	-138	-138	-137	-135	-133	-129	-124	-119	-115	-112
Fuels and lubricants	-1 633	-1 643	-1 685	-1 755	-1 834	-1 906	-1 964	-2 000	-2 024	-2 028
Parts for transport equipment	-701	-703	-704	-704	-705	-705	-707	-711	-715	-720
Parts for ADP equipment	-142	-132	-123	-116	-112	-109	-107	-104	-102	-100
Other parts for capital goods	-997	-1 017	-1 031	-1 035	-1 028	-1 016	-1 003	-992	-984	-975
Organic and inorganic chemicals	-352	-356	-359	-359	-360	-362	-367	-378	-393	-408
Paper and paperboard	-194	-195	-198	-201	-204	-205	-205	-206	-205	-205
Textile yarn and fabrics	-114	-114	-114	-113	-112	-111	-110	-110	-111	-112
Iron and steel	-338	-339	-337	-335	-332	-329	-323	-316	-310	-304
Plastics	-247	-249	-251	-252	-253	-254	-255	-256	-257	-258
Processed industrial supplies n.e.s.	-1 484	-1 500	-1 516	-1 530	-1 537	-1 538	-1 534	-1 529	-1 524	-1 522
Other merchandise goods	-121	-126	-134	-141	-144	-138	-129	-119	-110	-96
<i>Other goods</i>	-578	-571	-575	-610	-596	-663	-717	-758	-778	-791
Goods for processing	-36	-50	-66	-76	-2	-4	-5	-5	-4	—
Repairs on goods	-10	-10	-11	-11	-11	-11	-12	-12	-12	-13
Goods procured in ports by carriers	-118	-113	-110	-109	-109	-110	-112	-115	-117	-119
Non-monetary gold	-415	-397	-389	-415	-474	-538	-588	-626	-644	-658

— nil or rounded to zero (including null cells)

(a) For sign conventions, see paragraph 11 of the Explanatory Notes.

SERVICES (a)(b), Summary: **Original**

							3 MONTHS ENDED SEPTEMBER		Change
	2004-05	2005-06	2006-07	Jul 2007	Aug 2007	Sep 2007	2006	2007	
	\$m	\$m	\$m	\$m	\$m	\$m	\$m	\$m	%
Services credits	39 695	41 849	46 245	4 137	4 171	4 026	11 093	12 334	11.2
<i>Transportation services</i>	8 002	8 208	8 615	763	760	728	2 091	2 251	7.7
Freight	704	608	607	46	46	47	161	139	-13.7
Passenger and other	7 298	7 600	8 008	717	714	681	1 930	2 112	9.4
<i>Travel services</i>	21 440	22 624	25 280	2 286	2 322	2 206	6 040	6 814	12.8
<i>Other services</i>	10 253	11 017	12 350	1 088	1 089	1 092	2 962	3 269	10.4
Services debits	-39 315	-41 078	-44 367	-4 042	-3 921	-4 173	-11 097	-12 136	9.4
<i>Transportation services</i>	-13 796	-14 508	-15 368	-1 315	-1 330	-1 405	-3 854	-4 050	5.1
Freight	-7 500	-7 776	-8 044	-631	-699	-673	-1 966	-2 003	1.9
Passenger and other	-6 296	-6 732	-7 324	-684	-631	-732	-1 888	-2 047	8.4
<i>Travel services</i>	-14 507	-15 090	-15 968	-1 563	-1 410	-1 569	-4 181	-4 542	8.6
<i>Other services</i>	-11 012	-11 480	-13 031	-1 164	-1 181	-1 199	-3 062	-3 544	15.7
Memorandum items:									
Tourism related service credits(c)	25 584	26 728	29 517	2 650	2 683	2 533	7 030	7 866	11.9
Tourism related service debits(c)	-20 287	-21 374	-22 844	-2 212	-2 006	-2 265	-5 958	-6 483	8.8

(a) For sign conventions, see paragraph 11 of the Explanatory Notes.

(b) For more detailed trade in services components, see table 11.

(c) For a more detailed explanation of tourism related services, see paragraphs 17 and 18 of the Explanatory Notes.

SERVICES(a), Summary: Seasonally Adjusted and Trend Estimates

	Dec 2006	Jan 2007	Feb 2007	Mar 2007	Apr 2007	May 2007	Jun 2007	Jul 2007	Aug 2007	Sep 2007
	\$m	\$m	\$m	\$m	\$m	\$m	\$m	\$m	\$m	\$m

SEASONALLY ADJUSTED

Services credits	3 875	3 893	3 913	3 960	3 961	3 985	4 016	4 077	4 104	4 153
Transportation services	729	734	736	745	710	704	716	747	749	762
Freight	53	50	49	48	47	46	46	47	47	46
Passenger and other	676	684	686	697	663	658	670	700	702	716
Travel services	2 117	2 135	2 148	2 180	2 186	2 208	2 240	2 236	2 251	2 277
Other services(b)	1 029	1 024	1 030	1 035	1 065	1 072	1 059	1 093	1 104	1 114
Services debits	-3 746	-3 707	-3 746	-3 755	-3 742	-3 806	-3 827	-3 887	-3 919	-3 930
Transportation services	-1 333	-1 284	-1 335	-1 307	-1 238	-1 273	-1 272	-1 306	-1 312	-1 343
Freight	-670	-670	-670	-673	-671	-665	-661	-665	-672	-698
Passenger and other	-663	-614	-666	-634	-567	-608	-611	-642	-640	-645
Travel services	-1 337	-1 339	-1 314	-1 345	-1 361	-1 384	-1 397	-1 396	-1 410	-1 377
Other services(b)	-1 077	-1 084	-1 096	-1 102	-1 143	-1 150	-1 157	-1 184	-1 197	-1 211
Memorandum items:										
Tourism related service credits(c)	2 469	2 502	2 506	2 559	2 558	2 557	2 598	2 591	2 606	2 638
Tourism related service debits(c)	-1 994	-1 873	-1 920	-1 967	-1 932	-1 940	-1 984	-1 993	-2 020	-1 990

TREND ESTIMATES

Services credits	3 859	3 891	3 918	3 943	3 968	3 997	4 031	4 066	4 099	4 127
Transportation services	731	733	730	726	722	722	727	735	744	752
Freight	52	51	49	48	47	47	46	46	46	46
Passenger and other	679	682	681	678	675	676	680	688	697	706
Travel services	2 105	2 130	2 153	2 174	2 193	2 210	2 227	2 242	2 256	2 267
Other services	1 024	1 028	1 035	1 043	1 053	1 065	1 077	1 089	1 099	1 108
Services debits	-3 706	-3 724	-3 737	-3 752	-3 773	-3 803	-3 837	-3 871	-3 902	-3 929
Transportation services	-1 309	-1 309	-1 301	-1 290	-1 280	-1 278	-1 284	-1 296	-1 308	-1 323
Freight	-680	-676	-672	-668	-666	-666	-668	-671	-675	-680
Passenger and other	-629	-633	-629	-622	-614	-612	-617	-625	-633	-643
Travel services	-1 324	-1 329	-1 337	-1 349	-1 363	-1 376	-1 388	-1 395	-1 399	-1 400
Other services	-1 074	-1 086	-1 099	-1 114	-1 130	-1 148	-1 165	-1 181	-1 195	-1 206
Memorandum items:										
Tourism related service credits(c)	2 462	2 492	2 519	2 540	2 557	2 571	2 585	2 599	2 612	2 621
Tourism related service debits(c)	-1 912	-1 922	-1 930	-1 937	-1 947	-1 960	-1 975	-1 988	-1 998	-2 006

(a) For sign conventions, see paragraph 11 of the Explanatory Notes.

(b) In using these seasonally adjusted series, care should be exercised because of the difficulties associated with reliably estimating the seasonal pattern.

(c) For a more detailed explanation of tourism related services, see paragraphs 17 and 18 of the Explanatory Notes.

	CREDITS				DEBITS			
	Dec Qtr	Mar Qtr	Jun Qtr	Sep Qtr	Dec Qtr	Mar Qtr	Jun Qtr	Sep Qtr
	2006	2007	2007	2007	2006	2007	2007	2007
	\$m	\$m	\$m	\$m	\$m	\$m	\$m	\$m
Services	11 692	11 924	11 536	12 334	-11 333	-10 795	-11 142	-12 136
Transportation services	2 257	2 280	1 987	2 251	-4 044	-3 761	-3 709	-4 050
Passenger(c)	2 094	2 139	1 845	2 112	-1 661	-1 575	-1 604	-1 854
Freight	163	141	142	139	-2 176	-1 986	-1 916	-2 003
Other(c)	np	np	np	np	-207	-200	-189	-193
Travel services	6 250	6 662	6 328	6 814	-3 958	-3 797	-4 032	-4 542
Business	591	635	619	656	-613	-697	-664	-711
Personal	5 659	6 027	5 709	6 158	-3 345	-3 100	-3 368	-3 831
Education-related	2 480	2 833	3 139	3 495	-166	-172	-177	-261
Other	3 179	3 194	2 570	2 663	-3 179	-2 928	-3 191	-3 570
Communication services(d)	194	190	169	244	-204	-185	-212	-232
Construction services	33	36	32	29	—	—	—	—
Insurance services	176	176	176	181	-225	-225	-225	-233
Financial services	251	251	251	259	-150	-150	-150	-155
Computer and information services	421	335	366	367	-375	-340	-380	-386
Royalties and license fees	221	215	226	202	-856	-811	-840	-917
Other business services	1 534	1 404	1 632	1 605	-1 039	-983	-1 092	-1 118
Merchanting and other trade-related	192	193	211	193	-55	-52	-50	-52
Operational leasing	10	10	12	14	-230	-208	-186	-209
Miscellaneous business, professional and technical	1 332	1 201	1 409	1 398	-754	-723	-856	-857
Legal, accounting, management consulting and public relations	212	214	270	260	-104	-96	-173	-172
Advertising, market research and public opinion polling	57	60	66	51	-36	-40	-53	-26
Research and development	141	118	132	145	-37	-28	-26	-25
Architectural, engineering and other technical services	349	335	375	363	-123	-141	-146	-176
Agriculture, mining and on-site processing	87	88	92	96	-45	-55	-94	-78
Services between affiliated enterprises n.i.e.	356	263	327	316	-272	-204	-212	-220
Other	130	123	147	167	-137	-159	-152	-160
Personal, cultural, and recreational services	154	159	152	168	-269	-340	-262	-311
Audiovisual and related services	38	51	44	56	-224	-266	-237	-279
Personal, cultural and recreational services	116	108	108	112	-45	-74	-25	-32
Government services n.i.e.	201	216	217	214	-213	-203	-240	-192
Memorandum items:								
Tourism related services(e)	7 383	7 880	7 224	7 866	-5 714	-5 462	-5 710	-6 483

— nil or rounded to zero (including null cells)

np not available for publication but included in totals where applicable, unless otherwise indicated

(a) For sign conventions, see paragraph 11 of the Explanatory Notes.

(b) For more information see paragraphs 15 and 16 of the Explanatory Notes.

(c) Passenger transportation credits include other transportation services credits.

(d) Communications services includes other services n.i.e.

(e) For a more detailed explanation of tourism related services, see paragraphs 17 and 18 of the Explanatory Notes.

				Per cent of total merchandise exports(a)	3 MONTHS ENDED SEPTEMBER	
	Jul	Aug	Sep		2006	2007
	2007	2007	2007		\$m	\$m
	\$m	\$m	\$m	%	\$m	\$m
MAJOR COMMODITIES						
011 Meat of bovine animals	367	354	377	2.7	1 271	1 098
041 Wheat	225	103	218	1.6	993	546
268 Wool and other animal hair(b)	182	116	204	1.5	534	502
281 Iron ore and concentrates	1 312	1 485	1 360	9.9	3 909	4 157
285 Aluminium ore and concentrates	470	537	561	4.1	1 562	1 567
321 Coal, not agglomerated	1 587	1 736	1 739	12.6	5 790	5 062
333 Crude petroleum oils	661	857	504	3.7	2 161	2 022
334 Refined petroleum oils	294	264	251	1.8	840	809
343 Natural gas	428	434	269	2.0	1 362	1 130
684 Aluminium	575	511	477	3.5	1 584	1 563
781 Passenger motor vehicles	242	275	285	2.1	617	802
971 Gold, non-monetary	1 005	1 097	790	5.7	2 517	2 892

SECTION AND DIVISION OF THE SITC

0	Food and live animals(b)					
00	Live animals other than fish, crustaceans, molluscs and aquatic invertebrates	74	105	58	0.4	249 236
01	Meat and meat preparations	516	516	577	4.2	1 799 1 609
02	Dairy products and birds' eggs	166	185	215	1.6	574 566
03	Fish (not marine mammals), crustaceans, molluscs and aquatic invertebrates, and preparations thereof(b)	70	138	116	0.8	336 324
04	Cereals and cereal preparations(b)	357	220	322	2.3	1 441 899
05	Vegetables and fruit	122	126	102	0.7	385 350
06	Sugars, sugar preparations and honey(b)	22	25	23	0.2	76 70
07	Coffee, tea, cocoa, spices, and manufactures thereof	24	24	24	0.2	65 72
08	Feeding stuff for animals (excl. unmilled cereals)(b)	55	58	58	0.4	211 171
09	Miscellaneous edible products and preparations	38	38	40	0.3	117 116
	<i>Total Food and live animals</i>	<i>1 443</i>	<i>1 436</i>	<i>1 534</i>	<i>11.1</i>	<i>5 254 4 413</i>
1	Beverages and tobacco(b)					
11	Beverages(b)	290	273	295	2.1	764 857
12	Tobacco and tobacco manufactures	16	12	12	0.1	38 40
	<i>Total Beverages and tobacco</i>	<i>305</i>	<i>285</i>	<i>307</i>	<i>2.2</i>	<i>802 897</i>
2	Crude materials, inedible, except fuels(b)					
21	Hides, skins and furskins, raw	53	62	56	0.4	162 170
22	Oil seeds and oleaginous fruits	13	23	5	—	44 42
23	Crude rubber (incl. synthetic and reclaimed)	—	—	1	—	1 2
24	Cork and wood	95	116	93	0.7	283 304
25	Pulp and waste paper	18	20	19	0.1	41 56
26	Textile fibres and their wastes (not manufactured into yarn or fabric)(b)	237	171	273	2.0	846 681
27	Crude fertilisers (excl. those of Division 56) and crude minerals (excl. coal, petroleum and precious stones)	33	49	51	0.4	119 132
28	Metalliferous ores and metal scrap(b)	3 169	3 156	3 025	22.0	8 451 9 351
29	Crude animal and vegetable materials, n.e.s.(b)	21	15	16	0.1	55 53
	<i>Total Crude materials, inedible, except fuels</i>	<i>3 639</i>	<i>3 613</i>	<i>3 538</i>	<i>25.7</i>	<i>10 002 10 790</i>
3	Mineral fuels, lubricants and related materials(b)					
32	Coal, coke and briquettes	1 587	1 749	1 766	12.8	5 805 5 103
33	Petroleum, petroleum products and related materials(b)	957	1 122	756	5.5	3 005 2 835
34	Gas, natural and manufactured	498	592	344	2.5	1 652 1 434
	<i>Total Mineral fuels, lubricants and related materials</i>	<i>3 042</i>	<i>3 464</i>	<i>2 866</i>	<i>20.8</i>	<i>10 462 9 372</i>

— nil or rounded to zero (including null cells)

(a) Per cent of total merchandise exports is calculated for the most recent month.

(b) Excludes exports commodities subject to a confidentiality restriction. These are included in Division 98.

					3 MONTHS ENDED SEPTEMBER		
					Per cent of total merchandise exports(a)	2006	2007
					Jul 2007	Aug 2007	Sep 2007
					\$m	\$m	\$m
					%	\$m	\$m
.....							
SECTION AND DIVISION OF THE SITC							
4	Animal and vegetable oils, fats and waxes(b)						
41	Animal oils and fats	17	28	35	0.3	58	79
42	Fixed vegetable fats and oils, crude, refined or fractionated(b)	5	7	11	0.1	19	23
43	Fats and oils (processed), waxes and inedible mixtures or preparations, of animal or vegetable origin, n.e.s.	7	5	6	—	16	18
	Total Animal and vegetable oils, fats and waxes	28	41	52	0.4	93	120
5	Chemicals and related products, n.e.s.(b)						
51	Organic chemicals(b)	6	11	7	0.1	35	25
52	Inorganic chemicals(b)	72	72	63	0.5	165	208
53	Dyeing, tanning and colouring materials	51	51	56	0.4	164	158
54	Medicinal and pharmaceutical products(b)	393	359	330	2.4	917	1 082
55	Essential oils and resinoids and perfume materials; toilet, polishing and cleansing preparations	47	47	47	0.3	124	140
56	Fertilisers (excl. crude)	13	41	77	0.6	59	131
57	Plastics in primary forms(b)	27	35	33	0.2	71	96
58	Plastics in non-primary forms	29	37	27	0.2	94	93
59	Chemical materials and products, n.e.s.	79	71	64	0.5	196	214
	Total Chemicals and related products, n.e.s.	718	724	705	5.1	1 825	2 146
6	Manufactured goods classified chiefly by material(b)						
61	Leather, leather manufactures, and dressed furskins, n.e.s.	31	35	31	0.2	110	97
62	Rubber manufactures, n.e.s.	18	24	25	0.2	55	68
63	Cork and wood manufactures (excl. furniture)(b)	13	14	12	0.1	49	38
64	Paper, paperboard, and articles of paper pulp, of paper or of paperboard	61	60	53	0.4	188	174
65	Textile yarn, fabrics, made-up articles, nes, and related products	40	37	36	0.3	113	113
66	Non-metallic mineral manufactures, n.e.s.(b)	61	64	92	0.7	249	217
67	Iron and steel(b)	70	122	68	0.5	231	260
68	Non-ferrous metals(b)	1 236	1 044	1 121	8.2	3 168	3 402
69	Manufactures of metals, n.e.s.	84	96	102	0.7	245	282
	Total Manufactured goods classified chiefly by material	1 615	1 495	1 541	11.2	4 408	4 650
7	Machinery and transport equipment(b)						
71	Power generating machinery and equipment	102	94	118	0.9	354	314
72	Machinery specialised for particular industries	146	156	170	1.2	402	472
73	Metal working machinery	15	20	20	0.1	43	54
74	General industrial machinery and equipment, n.e.s. and machine parts, n.e.s.(b)	154	146	161	1.2	419	461
75	Office machines and automatic data processing machines	111	116	108	0.8	280	335
76	Telecommunications and sound recording and reproducing apparatus and equipment(b)	65	55	59	0.4	250	180
77	Electrical machinery, apparatus, appliances, parts (incl. non-electrical counterparts of electrical domestic equipment)(b)	155	166	168	1.2	454	489
78	Road vehicles (incl. air-cushion vehicles)	375	379	385	2.8	865	1 139
79	Transport equipment (excl. road vehicles)(b)	87	84	87	0.6	236	258
	Total Machinery and transport equipment	1 210	1 217	1 275	9.3	3 303	3 702

— nil or rounded to zero (including null cells)

(a) Per cent of total merchandise exports is calculated for the most recent month.

(b) Excludes exports commodities subject to a confidentiality restriction. These are included in Division 98.

					3 MONTHS ENDED SEPTEMBER	
					2006	2007
					Per cent of total merchandise exports(a)	
					%	
					\$m	\$m
SECTION AND DIVISION OF THE SITC						
8	Miscellaneous manufactured articles(b)					
81	Prefabricated buildings; sanitary, plumbing, heating and lighting fixtures and fittings, n.e.s.	14	16	14	0.1	31 44
82	Furniture, parts thereof; bedding, mattresses, mattress supports, cushions and similar stuffed furnishings	8	8	10	0.1	40 27
83	Travel goods, handbags and similar containers	2	2	3	—	6 7
84	Articles of apparel and clothing accessories	19	26	23	0.2	70 68
85	Footwear(b)	4	5	4	—	11 13
87	Professional, scientific and controlling instruments and apparatus, n.e.s.	149	161	159	1.2	441 469
88	Photographic apparatus, equipment and supplies and optical goods, n.e.s.; watches and clocks	26	30	27	0.2	90 82
89	Miscellaneous manufactured articles, n.e.s.	206	207	213	1.6	598 626
	<i>Total Miscellaneous manufactured articles</i>	428	454	453	3.3	1 285 1 336
9	Commodities and transactions not classified elsewhere in the SITC(c)					
93	Special transactions and commodities not classified according to kind	108	106	99	0.7	356 313
95	Gold coin whether or not legal tender, and other coin being legal tender	10	13	14	0.1	15 37
96	Coin (excl. gold coin), not being legal tender	—	—	—	—	—
97	Gold, non-monetary (excl. gold ores and concentrates)	1 005	1 097	790	5.7	2 517 2 892
98	Combined confidential items excl. some of SITC 280 (exports only) and some of SITCs 510 and 520 (imports only)(c)	885	747	585	4.3	2 291 2 217
	<i>Total commodities and transactions not classified elsewhere in the SITC</i>	2 007	1 964	1 488	10.8	5 180 5 459
Total merchandise exports		14 436	14 691	13 758	100.0	42 615 42 885
Balance of Payments Adjustments		26	172	99	. .	459 297
Goods Credits (exports) on a Balance of Payments Basis		14 462	14 863	13 857	. .	43 074 43 182
. . not applicable (b) Excludes exports commodities subject to a confidentiality restriction. These are included in Division 98. — nil or rounded to zero (including null cells) (a) Per cent of total merchandise exports is calculated for the most recent month. (c) Includes exports commodities subject to a confidentiality restriction.						

					3 MONTHS ENDED SEPTEMBER	
					2006	2007
					
	Jul 2007	Aug 2007	Sep 2007	Per cent of total merchandise imports(a)		
	\$m	\$m	\$m	%	\$m	\$m
MAJOR COMMODITIES						
333 Crude petroleum oils	1 171	1 381	1 103	7.1	3 438	3 655
334 Refined petroleum oils	580	690	668	4.3	1 885	1 938
542 Medicaments	590	562	480	3.1	1 657	1 632
641 Paper and paperboard	192	201	175	1.1	557	568
752 Automatic data processing machines	583	568	533	3.5	1 578	1 684
759 Parts and accessories of office machines	189	180	173	1.1	589	542
764 Telecommunications equipment	502	504	508	3.3	1 470	1 514
781 Passenger motor vehicles	1 045	1 156	1 143	7.4	3 248	3 345
782 Motor vehicles for the transport of goods	427	468	443	2.9	1 087	1 338
784 Parts and accessories of motor vehicles	205	236	213	1.4	664	653
792 Aircraft and associated equipment	101	417	181	1.2	719	698
971 Gold, non-monetary	708	745	433	2.8	1 163	1 885

SECTION AND DIVISION OF THE SITC

0	Food and live animals					
00	Live animals other than fish, crustaceans, molluscs and aquatic invertebrates	7	7	1	—	32 14
01	Meat and meat preparations	30	31	28	0.2	78 89
02	Dairy products and birds' eggs	33	38	37	0.2	103 107
03	Fish (not marine mammals), crustaceans, molluscs and aquatic invertebrates, and preparations thereof	81	97	117	0.8	264 295
04	Cereals and cereal preparations	49	65	54	0.4	147 169
05	Vegetables and fruit	110	133	110	0.7	306 353
06	Sugars, sugar preparations and honey	18	21	22	0.1	54 61
07	Coffee, tea, cocoa, spices, and manufactures thereof	81	98	83	0.5	223 262
08	Feeding stuff for animals (excl. unmilled cereals)	40	45	37	0.2	105 122
09	Miscellaneous edible products and preparations	119	121	118	0.8	280 358
	<i>Total food and live animals</i>	568	655	609	3.9	1 593 1 831
1	Beverages and tobacco					
11	Beverages	85	130	107	0.7	284 322
12	Tobacco and tobacco manufactures	17	18	16	0.1	54 51
	<i>Total beverages and tobacco</i>	102	148	123	0.8	338 373
2	Crude materials, inedible, except fuels					
21	Hides, skins and furskins, raw	—	—	—	—	— 1
22	Oil seeds and oleaginous fruits	6	4	2	—	8 11
23	Crude rubber (incl. synthetic and reclaimed)	14	15	12	0.1	44 40
24	Cork and wood	50	54	49	0.3	143 153
25	Pulp and waste paper	21	27	31	0.2	67 79
26	Textile fibres and their wastes (not manufactured into yarn or fabric)	12	13	11	0.1	39 36
27	Crude fertilisers (excl. those of Division 56) and crude minerals (excl. coal, petroleum and precious stones)	15	24	13	0.1	36 52
28	Metalliferous ores and metal scrap	77	39	53	0.3	157 170
29	Crude animal and vegetable materials, n.e.s.	20	21	22	0.1	64 63
	<i>Total crude materials, inedible, except fuels</i>	214	197	195	1.3	558 605
3	Mineral fuels, lubricants and related materials(b)					
32	Coal, coke and briquettes	2	1	1	—	5 4
33	Petroleum, petroleum products and related materials(b)	1 786	2 097	1 817	11.8	5 410 5 699
34	Gas, natural and manufactured	72	128	101	0.7	269 302
	<i>Total mineral fuels, lubricants and related materials</i>	1 861	2 226	1 918	12.4	5 684 6 005

— nil or rounded to zero (including null cells)

(a) Per cent of total merchandise imports is calculated for the most recent month.

(b) Excludes imports commodities subject to a confidentiality restriction. These are included in Division 98.

					3 MONTHS ENDED SEPTEMBER		
					Per cent of total merchandise imports(a)	2006	2007
					Jul 2007	Aug 2007	Sep 2007
					\$m	\$m	\$m
					%	\$m	\$m
.....							
SECTION AND DIVISION OF THE SITC							
4	Animal and vegetable oils, fats and waxes						
41	Animal oils and fats	2	3	1	—	7	5
42	Fixed vegetable fats and oils, crude, refined or fractionated	48	35	33	0.2	112	116
43	Fats and oils (processed), waxes and inedible mixtures or preparations, of animal or vegetable origin, n.e.s.	6	6	4	—	16	16
	Total animal and vegetable oils, fats and waxes	56	44	38	0.2	135	138
5	Chemicals and related products, n.e.s.(b)						
51	Organic chemicals(b)	287	324	318	2.1	733	930
52	Inorganic chemicals(b)	96	90	79	0.5	274	264
53	Dyeing, tanning and colouring materials	48	55	53	0.3	154	155
54	Medicinal and pharmaceutical products	717	698	571	3.7	1 981	1 985
55	Essential oils and resinoids and perfume materials; toilet, polishing and cleansing preparations	126	145	159	1.0	430	430
56	Fertilisers (excl. crude)	89	36	52	0.3	142	176
57	Plastics in primary forms(b)	138	153	150	1.0	395	441
58	Plastics in non-primary forms	104	109	109	0.7	312	322
59	Chemical materials and products, n.e.s.(b)	145	162	135	0.9	438	442
	Total chemicals and related products, n.e.s.	1 750	1 771	1 624	10.5	4 859	5 146
6	Manufactured goods classified chiefly by material(b)						
61	Leather, leather manufactures, and dressed furskins, n.e.s.	14	15	15	0.1	34	43
62	Rubber manufactures, n.e.s.(b)	212	212	188	1.2	609	612
63	Cork and wood manufactures (excl. furniture)	48	56	48	0.3	151	153
64	Paper, paperboard, and articles of paper pulp, of paper or of paperboard(b)	247	263	233	1.5	717	744
65	Textile yarn, fabrics, made-up articles n.e.s. and related products	201	221	216	1.4	647	637
66	Non-metallic mineral manufactures, n.e.s.	193	201	199	1.3	588	594
67	Iron and steel(b)	331	323	259	1.7	809	913
68	Non-ferrous metals(b)	117	140	121	0.8	440	378
69	Manufactures of metals, n.e.s.	394	460	376	2.4	1 109	1 231
	Total manufactured goods classified chiefly by material	1 758	1 892	1 655	10.7	5 103	5 305
7	Machinery and transport equipment						
71	Power generating machinery and equipment	353	446	318	2.1	930	1 117
72	Machinery specialised for particular industries	583	659	708	4.6	1 768	1 950
73	Metal working machinery	57	67	69	0.4	186	193
74	General industrial machinery and equipment, n.e.s. and machine parts, n.e.s.	739	842	828	5.4	2 342	2 408
75	Office machines and automatic data processing machines	822	806	764	4.9	2 329	2 392
76	Telecommunications and sound recording and reproducing apparatus and equipment	820	858	941	6.1	2 508	2 619
77	Electrical machinery, apparatus, appliances, parts (incl. non-electrical counterparts of electrical domestic equipment)	789	778	751	4.9	2 172	2 318
78	Road vehicles (incl. air-cushion vehicles)	1 842	2 041	1 991	12.9	5 478	5 874
79	Transport equipment (excl. road vehicles)	159	492	293	1.9	883	944
	Total machinery and transport equipment	6 163	6 990	6 663	43.2	18 596	19 816

— nil or rounded to zero (including null cells)

(a) Per cent of total merchandise imports is calculated for the most recent month.

(b) Excludes imports commodities subject to a confidentiality restriction. These are included in Division 98.

					3 MONTHS ENDED SEPTEMBER	
					2006	2007
					\$m	\$m
SECTION AND DIVISION OF THE SITC						
8	Miscellaneous manufactured articles					
81	Prefabricated buildings; sanitary, plumbing, heating and lighting fixtures and fittings, n.e.s.	54	58	67	0.4	164 178
82	Furniture, parts thereof; bedding, mattresses, mattress supports, cushions and similar stuffed furnishings	203	231	218	1.4	618 652
83	Travel goods, handbags and similar containers	59	64	57	0.4	162 180
84	Articles of apparel and clothing accessories	405	422	382	2.5	1 189 1 209
85	Footwear	112	122	98	0.6	341 332
87	Professional, scientific and controlling instruments and apparatus, n.e.s.	363	361	340	2.2	1 034 1 063
88	Photographic apparatus, equipment and supplies and optical goods, n.e.s.; watches and clocks	115	119	112	0.7	338 345
89	Miscellaneous manufactured articles, n.e.s.	731	805	859	5.6	2 538 2 395
	<i>Total miscellaneous manufactured articles</i>	<i>2 042</i>	<i>2 180</i>	<i>2 133</i>	<i>13.8</i>	<i>6 383 6 355</i>
9	Commodities and transactions not classified elsewhere in the SITC(b)					
93	Special transactions and commodities not classified according to kind	3	2	3	—	9 9
95	Gold coin whether or not legal tender, and other coin being legal tender	—	—	—	—	— 1
96	Coin (excl. gold coin), not being legal tender	—	—	—	—	— —
97	Gold, non-monetary (excl. gold ores and concentrates)	708	745	433	2.8	1 163 1 885
98	Combined confidential items excl. some of SITC 280 (exports only) and some of SITCs 510 and 520 (imports only)(b)	22	46	45	0.3	31 114
	<i>Total commodities and transactions not classified elsewhere in the SITC</i>	<i>734</i>	<i>794</i>	<i>482</i>	<i>3.1</i>	<i>1 203 2 009</i>
	Total merchandise imports	15 247	16 896	15 441	100.0	44 452 47 583
	Balance of Payments Adjustment	210	208	326	. .	785 745
	Goods Debits (imports) on a Balance of Payments Basis	15 457	17 104	15 767	. .	45 237 48 328

.. not applicable

- nil or rounded to zero (including null cells)

(a) Per cent of total merchandise imports is calculated for the most recent month.

(b) Includes imports commodities subject to a confidentiality restriction.

	EXPORTS				IMPORTS				BALANCE OF MERCHANDISE TRADE	
	2006-07	September 2007	3 months ended September 2006	3 months ended September 2007	2006-07	September 2007	3 months ended September 2006	3 months ended September 2007	2006-07	3 months ended September 2007
	\$m	\$m	\$m	\$m	\$m	\$m	\$m	\$m		
Belgium	1 326	149	257	380	1 607	115	392	382	-281	-2
Brazil	853	74	219	241	859	86	225	246	-6	-6
Canada	1 768	188	458	448	2 077	171	478	508	-309	-61
China	22 807	1 840	5 144	5 652	27 140	2 579	6 808	7 542	-4 333	-1 889
Denmark	189	15	58	43	1 138	64	253	207	-949	-164
Egypt(b)	337	25	60	87	17	2	4	5	320	82
Fiji	383	33	113	98	148	11	49	32	235	66
Finland	1 632	75	313	326	848	65	200	222	784	105
France	1 365	96	345	467	3 910	285	913	1 238	-2 546	-771
Germany	1 444	159	324	367	9 274	839	2 270	2 551	-7 830	-2 184
Hong Kong (Sar of China)	3 038	227	789	674	1 419	134	405	391	1 619	283
India	10 095	562	2 655	2 314	1 314	152	327	420	8 781	1 894
Indonesia	4 240	316	1 324	989	4 646	426	965	1 224	-407	-236
Iran	204	12	42	37	41	2	12	8	163	29
Iraq	96	1	92	4	36	—	20	—	61	4
Ireland	209	19	48	55	2 120	161	520	504	-1 911	-449
Israel	188	11	55	37	640	50	157	140	-451	-104
Italy	1 742	101	514	362	4 869	424	1 148	1 232	-3 127	-870
Japan	32 629	2 399	8 541	8 074	17 399	1 471	4 321	4 168	15 230	3 906
Korea, Republic of	13 098	1 167	3 167	3 421	6 012	503	1 481	1 496	7 086	1 925
Kuwait	493	64	101	165	231	—	55	78	262	86
Malaysia	3 103	244	749	794	6 593	697	1 466	1 986	-3 490	-1 192
Mexico	837	38	181	166	1 102	95	288	280	-266	-115
Netherlands	2 976	194	730	615	1 495	105	368	337	1 481	278
New Zealand	9 434	818	2 551	2 498	5 616	547	1 397	1 625	3 818	873
Pakistan	320	98	91	174	151	11	34	35	169	139
Papua New Guinea	1 524	172	334	461	2 215	99	529	591	-692	-130
Philippines	1 056	105	305	329	753	41	205	190	303	139
Saudi Arabia	2 025	176	468	494	943	51	210	242	1 082	252
Singapore	4 638	253	1 411	965	10 132	904	2 401	2 444	-5 495	-1 478
South Africa	2 316	243	587	730	1 402	108	394	367	914	363
Spain	1 254	91	366	247	1 625	138	389	444	-371	-197
Sweden	351	38	137	116	2 287	165	565	556	-1 936	-440
Switzerland	1 130	159	51	662	1 916	160	491	530	-787	132
Taiwan	6 189	463	1 485	1 536	4 409	387	1 083	1 114	1 780	422
Thailand	4 256	350	1 073	1 132	7 210	708	1 620	1 925	-2 954	-792
Turkey	527	28	85	168	437	30	87	95	90	73
United Arab Emirates	2 392	273	407	1 134	1 751	142	556	612	642	522
United Kingdom	6 146	875	1 768	1 611	7 407	568	1 727	2 770	-1 261	-1 159
United States of America	9 804	804	2 455	2 495	24 908	1 844	6 245	5 680	-15 104	-3 186
Viet Nam	1 629	81	653	269	4 522	383	1 517	1 053	-2 892	-784
Other Countries	8 100	721	2 110	2 047	8 186	719	1 879	2 113	-86	-66
Total	168 139	13 758	42 615	42 885	180 803	15 441	44 452	47 583	-12 664	-4 698
APEC	121 040	9 547	30 852	30 139	128 461	11 154	31 768	32 772	-7 422	-2 633
ASEAN	19 050	1 359	5 547	4 518	34 970	3 232	8 457	9 114	-15 920	-4 596
Developing Countries	87 404	6 857	21 835	22 054	84 719	7 715	20 912	22 643	2 685	-589
Least Developed Countries	1 559	137	386	382	246	19	59	57	1 313	325
European Union(c)	19 191	1 861	4 991	4 720	39 020	3 145	9 313	11 097	-19 828	-6 377
OECD	88 327	7 459	22 490	22 634	99 399	8 107	24 315	25 751	-11 072	-3 117

— nil or rounded to zero (including null cells)

(a) See Time series spreadsheets for details of all countries.

(b) Exports of Alumina to Egypt are excluded from country total and included in the 'Other Countries' category.

(c) The European Union includes 27 member countries.

	September		3 MONTHS ENDED SEPTEMBER	
	2006-07	2007	2006	2007
	\$m	\$m	\$m	\$m
EXPORTS (a)				
New South Wales	28 073	2 421	7 176	7 415
Victoria	20 047	1 706	5 181	5 192
Queensland	35 440	2 926	9 309	8 498
South Australia	9 015	918	2 169	2 648
Western Australia	60 538	4 583	14 762	15 313
Tasmania	3 714	244	918	909
Northern Territory	4 014	320	1 149	980
Australian Capital Territory	8	—	—	2
State not available for publication(b)	809	69	229	193
Re-exports	6 481	572	1 722	1 735
Total exports	168 139	13 758	42 615	42 885
IMPORTS				
New South Wales	69 792	6 146	17 415	18 453
Victoria	51 326	4 359	13 005	13 271
Queensland	27 201	2 287	6 764	7 235
South Australia	6 583	570	1 558	1 654
Western Australia	22 124	1 812	4 831	6 217
Tasmania	614	72	170	168
Northern Territory	2 846	194	708	581
Australian Capital Territory	317	—	1	3
Total imports	180 803	15 441	44 452	47 583

— nil or rounded to zero (including null cells)

(a) State in which the final stage of production or manufacture occurs.

(b) Exports of Alumina to Bahrain, Egypt and Iceland are excluded from the state totals and included in 'State not available for publication category'.

PERIOD AVERAGE EXCHANGE RATES(a): Per Australian dollar

<i>Period</i>	<i>United States dollar</i>	<i>UK pound sterling</i>	<i>Euro</i>	<i>Japanese yen</i>	<i>Trade-weighted index of value of the \$A(b)</i>
FINANCIAL YEAR					
2004-05	0.7529	0.4052	0.5918	80.45	62.7
2005-06	0.7474	0.4205	0.6143	85.90	63.3
2006-07	0.7863	0.4066	0.6018	93.21	64.8
MONTHS					
2006					
July	0.7514	0.4075	0.5920	86.89	63.0
August	0.7630	0.4034	0.5958	88.45	63.7
September	0.7566	0.4009	0.5938	88.58	63.2
October	0.7539	0.4021	0.5975	89.46	63.2
November	0.7721	0.4040	0.5995	90.52	64.0
December	0.7861	0.4002	0.5949	92.05	64.4
2007					
January	0.7839	0.4002	0.6027	94.28	64.7
February	0.7823	0.3993	0.5981	94.29	64.4
March	0.7919	0.4067	0.5980	92.90	64.8
April	0.8263	0.4156	0.6117	98.17	67.1
May	0.8252	0.4157	0.6103	99.58	67.0
June	0.8423	0.4238	0.6274	103.34	68.5
July	0.8675	0.4266	0.6325	105.47	69.7
August	0.8282	0.4123	0.6083	96.63	66.8
September	0.8464	0.4196	0.6088	97.34	67.7

- (a) These exchange rates and the trade-weighted index are derived using rates provided by the Reserve Bank of Australia in respect of each trading day.
- (b) May 1970 = 100. The Trade-weighted index is reweighted annually on 1 October and on special occasions as required.

EXPLANATORY NOTES

INTRODUCTION

1 This publication presents preliminary estimates of Australia's international trade in goods and services on a balance of payments basis and merchandise import and export statistics on a recorded trade basis.

2 Merchandise trade statistics on a recorded trade basis are compiled from information submitted by exporters and importers or their agents to the Australian Customs Service (ACS). Adjustments for coverage, timing and valuation are made to recorded trade data to convert them to a balance of payments basis. The main source for services data is the quarterly Survey of International Trade in Services.

3 More comprehensive quarterly estimates of Australia's trade in goods and services, together with comprehensive details of Australia's balance of payments are included in the quarterly publication, *Balance of Payments and International Investment Position, Australia* (cat. no. 5302.0). Detailed monthly statistics on merchandise trade are available on Time Series Spreadsheets or by subscription to tailored services.

CONCEPTS, SOURCES AND METHODS

4 The conceptual framework used in compiling Australia's merchandise trade statistics can be found in *International Merchandise Trade, Australia: Concepts, Sources and Methods, 2001* (cat. no. 5489.0).

5 The conceptual framework used in compiling Australia's balance of payments statistics is based on the Fifth Edition of the International Monetary Fund's *Balance of Payments Manual* (BPM5, 1993). Descriptions of the underlying concepts and structure of the balance of payments and the sources, methods and terms used in compiling the estimates are presented in *Balance of Payments and International Investment Position, Australia: Concepts, Sources and Methods, 1998* (cat. no. 5331.0). To bring merchandise trade statistics on a recorded trade basis to a balance of payments basis, timing adjustments are made to ensure that the transaction is recorded in the period in which ownership changed, rather than in the period in which the transaction was recorded by ACS. Adjustments are also made to account for the change of ownership of goods not included in merchandise trade statistics. Chapter 6 of cat. no. 5331.0 provides more detail on the relationship between statistics on international merchandise trade on a recorded trade basis and on a balance of payments basis.

6 Both of the Concepts, Sources and Methods publications are available to download for free from the ABS website. Select *Methods, Classifications, Concepts & Standards*, then choose *ABS concepts, classifications and statistical standards* and then the catalogue numbers as above.

SEASONAL ADJUSTMENT

7 Monthly original estimates are volatile, being subject to calendar-related and large irregular influences. Seasonally adjusted estimates are derived by estimating and removing from the original series systematic calendar related effects, such as seasonal, trading day length of month and moving holiday influences. All other effects are removed from the original estimates prior to the seasonal adjustment process. Seasonal adjustment does not aim to remove the irregular or non-seasonal influences which may be present in any particular month. These irregular influences may reflect both random economic events and difficulties of statistical recording. The estimates of international trade in goods and services on a balance of payments basis are seasonally adjusted. The merchandise exports and imports statistics on a recorded trade basis are not.

8 The seasonally adjusted statistics in this publication use the concurrent seasonal adjustment technique and Autoregressive Integrated Moving Average (ARIMA) Modelling to estimate factors for the current and previous months. Under concurrent seasonal adjustment, the estimates of seasonal factors are fine tuned as new original estimates become available each period. The seasonally adjusted estimates are subject to revisions at each reference month as the estimates of seasonal factors are improved.

EXPLANATORY NOTES *continued*

ARIMA MODELLING

9 ARIMA modelling relies on the characteristics of the series being analysed to project future period data. ARIMA modelling is used on a case-by-case basis where it results in reduced revisions to seasonally adjusted series when subsequent data become available. The projected values are temporary, intermediate values, that are only used internally to improve the estimation of the seasonal factors. The projected data do not affect the original estimates and are discarded at the end of the seasonal adjustment process. The ARIMA model is assessed as part of the annual reanalysis and, following the 2007 annual re-analysis, 89% of trade in goods and services time series use an ARIMA model. For more information on the details of ARIMA modelling see Feature article: Use of ARIMA modelling to reduce revisions in the October 2004 issue of *Australian Economic Indicators* (cat. no. 1350.0).

TREND ESTIMATES

10 The month-to-month movements of the seasonally adjusted estimates may not be reliable indicators of trend behaviour because they include irregular or non-seasonal movements. Trend estimates are derived by applying a 13-term Henderson moving average to the seasonally adjusted series. The use of a 13-term Henderson average can result in revisions to the estimates for the most recent six months as additional observations become available. Revisions can also occur because of changes in the original data and as a result of the re-estimation of the seasonal factors.

SIGN CONVENTION

11 In keeping with balance of payments conventions, where statistics are on a balance of payments basis, credit entries (exports) are shown without sign and debit items (imports) are shown as negative entries. For statistics on a recorded trade basis, both imports and exports are shown without sign. The calculation of percentage changes on balance of payments debit items are made without regard to sign. References to balance of payments debit items in Key Figures, Key Points, and Analysis and Comments are also made without regard to sign.

COMMODITY BREAKDOWNS OF GOODS

12 For details of the classification used for goods exports on a balance of payments basis (credits), see table 6.6 in *Balance of Payments and International Investment Position, Australia: Concepts, Sources and Methods, 1998* (cat. no. 5331.0).

13 Details of the classification of goods imports on a balance of payments basis (debits) are provided in table 6.7 in cat. no. 5331.0.

14 The recorded trade statistics shown in tables 12 and 13 are classified by the Standard International Trade Classification (SITC). The first section of tables 12 and 13 show the most significant commodities (by value) at the SITC 3 digit level. Imports and exports of goods at a more detailed level are available from the Time Series spreadsheets.

COMMODITY BREAKDOWNS OF SERVICES

15 The quarterly detailed services data published in table 11 are consistent with the monthly aggregates shown in table 9.

16 Monthly indicators for many of the services components that are only surveyed quarterly are not available. In particular, the Freight and Other transportation components of Total services credits are not available for publication on a monthly basis. The estimates for these items shown in table 9 are therefore derived by dividing the quarterly estimate by three. Where quarterly survey data are not available, freight debits are derived directly from imports data for the reference month as a difference between total merchandise cost, insurance and freight (CIF) and free on board (FOB), adjusted to reflect timing and processing adjustments. For freight credits and other transportation credits and debits, estimates are derived by extrapolating the last month's data by an average of movements for the same month over the three previous years.

EXPLANATORY NOTES *continued*

TOURISM RELATED SERVICES

17 The tourism related services memorandum items provide timely indicators of the movements in tourism related activities, not an absolute measure of the level of these activities. These series are not compiled on a balance of payments conceptual basis. However, they do provide a reasonable approximation of world tourism related activities.

18 The memorandum items have been derived by re-aggregating relevant components of the international trade in services series of the balance of payments accounts. The tourism related indicator has been derived by combining total travel services (business, education-related and other personal travel), passenger fares, and the air transport component of other transportation services which relates to agency fees and commission receipts.

SERVICES BY STATE AND BY PARTNER COUNTRY

19 Annual services data by state and by partner country are released twice yearly. Calendar year data are usually released with the March issue of this publication and financial year data are released with the September issue. Refer to Time series data for details.

20 Services credits are classified by the state of provision, while services debits are classified by the state of consumption. The state allocations for transportation, travel and communication services are based on a number of indicators including merchandise trade statistics by state, overseas passenger arrivals and departures by state of clearance and data provided by the Department of Education, Science and Training. The allocation for other services (about 25% of all trade in services) is primarily based on the location of the business reporting the information, which serves as a proxy for the state of provision/consumption of that service. The data should be used with care but are considered suitable for analysis over time.

21 A comprehensive explanation of the data sources used and the methodology applied in the compilation of partner country statistics is provided in Chapter 17 of *Balance of Payments and International Investment Position, Australia - Concepts, Sources and Methods* (cat. no. 5331.0). Approximately 7% of total services credits and 5% of total services debits for 2006–07 are either confidential, or unable to be allocated to individual countries.

ABS DATA AVAILABLE

22 More detailed balance of payments and recorded merchandise trade data, including forward seasonal factors are available as time series spreadsheets or data cubes from the ABS website.

23 More detailed merchandise trade data by commodity, country and state, and statistics included in this and related publications are available on request. Inquiries should be made to the National Information and Referral Service as shown on the back of this publication.

RELATED PRODUCTS AND PUBLICATIONS

24 Users may also wish to refer to the following publications which can be downloaded free of charge from the ABS web site:

- *Balance of Payments and International Investment Position, Australia* (cat. no. 5302.0) – issued quarterly
- *International Merchandise Imports, Australia* (cat. no. 5439.0) – issued monthly
- *International Trade Price Indexes, Australia* (cat. no. 6457.0) – issued quarterly
- *Balance of Payments and International Investment Position, Australia: Concepts, Sources and Methods* (cat. no. 5331.0)
- *Information Paper: Quality of Australian Balance of Payments Statistics* (cat. no. 5342.0)
- *International Merchandise Trade, Australia: Concepts, Sources and Methods* (cat. no. 5489.0)
- *A Guide to Australian Balance of Payments and International Investment Position Statistics* (cat. no. 5362.0.55.001).

EXPLANATORY NOTES *continued*

RELATED PRODUCTS AND PUBLICATIONS *continued*

25 Current publications produced by the ABS are listed in the Catalogue of Publications and Products (cat. no. 1101.0). The Catalogue is available from any ABS office or from this site. The ABS also issues a daily Release Advice on the web site which details products to be released in the week ahead.

CAUTIONARY NOTE

26 The tables in this publication are presented on two bases. Tables 1–11 contain estimates of Australia's international trade in goods and services which have been adjusted for coverage, valuation and timing to a balance of payments basis. Tables 12–15 contain estimates of merchandise exports and imports based on Australian Customs Service records. Paragraph 5 of the Explanatory Notes provides an explanation of the difference between these bases.

ROUNDING

27 Where figures have been rounded, discrepancies may occur between sums of the component items and totals. Percentage movements are calculated from data at the level of precision presented in this publication (i.e. \$m) except for international merchandise trade tables.

EXPLANATORY NOTES *continued*

ABBREVIATIONS

\$b	billion (thousand million) dollars
\$m	million dollars
ABS	Australian Bureau of Statistics
APEC	Asia Pacific Economic Co-operation
ASEAN	Association of South-East Asian Nations
n.e.s.	not elsewhere specified
n.i.e.	not included elsewhere
OECD	Organisation for Economic Co-operation and Development
SAR	Special Administrative Region
SITC	Standard International Trade Classification

APPENDIX RELATED ARTICLES

Article	Source(a)	Issue
Investment		
Foreign ownership of equity	5302.0	Sep qtr 2006
Kangaroo bonds	5302.0	Sep qtr 2004
Gross external debt	5302.0	Sep qtr 2003
Measuring Australia's foreign currency exposure	5302.0	Dec qtr 2001
Balance of payments		
International comparison of balance of payments statistics	(b) 5363.0	1999–2000
The Sydney Olympic Games Update	5368.0	Jul 2000
The Sydney Olympic Games	5302.0	Sep qtr 1999
Merchandise trade		
Number and characteristics of Australian exporters	5368.0.55.006	2005–2006
New methodology for deriving counts of Australian exports	5368.0	Feb 2006
Export and Import Invoice Currencies, 2005	5368.0	Jun 2005
Australia's Importers, 2003–04	5368.0	Nov 2004
Australia's Exporters, 2003–04	5368.0	Oct 2004
Australia's Trade with the USA	5368.0	Mar 2004
Trade through Australia's ports	5422.0	Sep qtr 2002
Australia's trade in wine	5422.0	Dec qtr 2001
Australia's export markets, 1991–92 to 2000–01	5422.0	Jun qtr 2001
Major commodities traded by Australia, 1991 to 2000	(b) 5422.0	Dec qtr 2000
Australia's trade in crude petroleum	5422.0	Mar qtr 2000
Australia's merchandise trade with the Republic of Korea	5422.0	Sep qtr 1999
Australia's merchandise trade with Japan	5422.0	Mar qtr 1999
Bilateral merchandise trade statistics reconciliation: Australia and the European Union, 1992 to 1997	5422.0	Sep qtr 1998
Trade in services		
International trade in services by partner country, 2006, preliminary	5368.0	Dec 2006
Changes to International Trade in Services Statistics, August 2006	5368.0	Aug 2006
Changes to International trade in services travel statistics	5368.0	Aug 2005
International trade in education services	5302.0	Sep 2001
Finance		
Impact of 2003–2004 farm season on Australian production	1350.0	Oct 2003
Recent trends in construction and first home buyers finance	5609.0	Mar 2002
Household sector data in the financial accounts	5232.0	Mar qtr 2002
Investment Managers	5655.0	Jun qtr 2000
Venture capital, 1999–2000	5611.0	2000–01
Technical information		
Changes on 1 January 2007 to Statistical Codes in the AHECC and the Customs Tariff	1233.0.55.001	Nov 2006
ABS implementation in January 2007 of revisions to international trade classifications, 2007	5368.0.55.005	June 2006
Revised Treatment of Goods for Processing in Merchandise Trade and Balance of Payments Statistics	5368.0	May 2006
Impact of Customs and ABS changes on import statistics from October 2005	5439.0	Oct 2005
ABS Management of the Impact of the Implementation of the Imports Component of the New Customs System	5439.0	Aug 2005
Changes to country and port classifications	5368.0	May 2003
Implementation of New Customs Systems	5368.0	Aug 2004
The effect of customs changes on export statistics	5422.0	Jun qtr 2002
Harmonized system changes	5422.0	Sep qtr 2001
International trade review: data quality and client queries	5422.0	Jun qtr 2000
Data confidentiality	5422.0	Dec qtr 1999

(a) In the ABS web site home page, select Key Products; Papers & Articles; ABS Articles; Feature Articles by Catalogue Number.

(b) This article can be found in pdf format by referring to the Details page of the specified issue of this publication on the ABS web site and click on Download Now.

FOR MORE INFORMATION . . .

<i>INTERNET</i>	www.abs.gov.au the ABS website is the best place for data from our publications and information about the ABS.
<i>LIBRARY</i>	A range of ABS publications are available from public and tertiary libraries Australia wide. Contact your nearest library to determine whether it has the ABS statistics you require, or visit our website for a list of libraries.

INFORMATION AND REFERRAL SERVICE

Our consultants can help you access the full range of information published by the ABS that is available free of charge from our website, or purchase a hard copy publication. Information tailored to your needs can also be requested as a 'user pays' service. Specialists are on hand to help you with analytical or methodological advice.

<i>PHONE</i>	1300 135 070
<i>EMAIL</i>	client.services@abs.gov.au
<i>FAX</i>	1300 135 211
<i>POST</i>	Client Services, ABS, GPO Box 796, Sydney NSW 2001

FREE ACCESS TO STATISTICS

All statistics on the ABS website can be downloaded free of charge.

<i>WEB ADDRESS</i>	www.abs.gov.au
--------------------	-----------------------



2536800009076

ISSN 1328 2778

RRP \$26.00